



Indiana

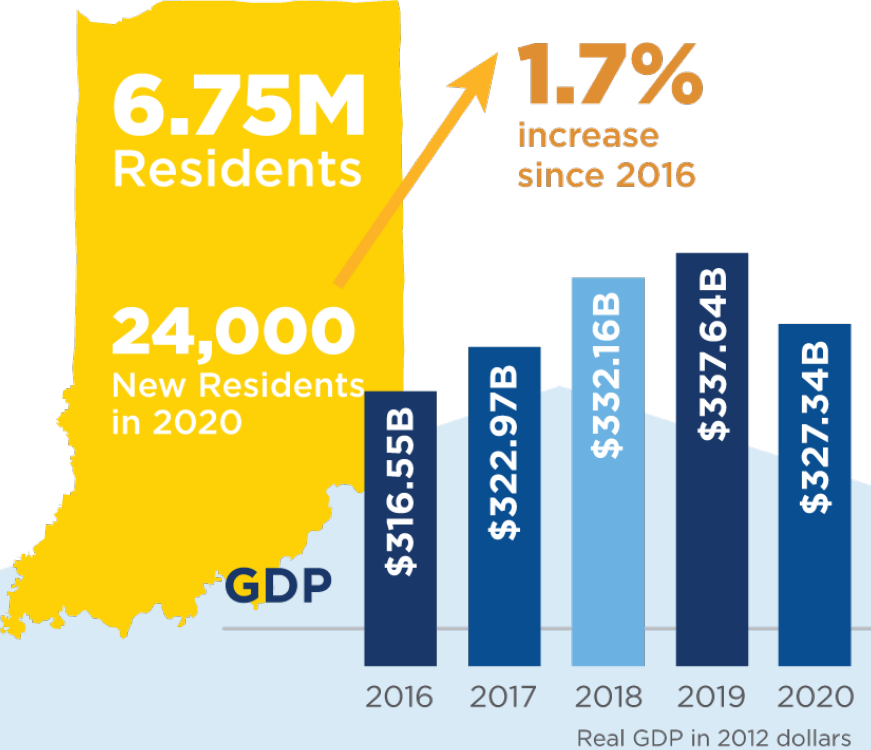
Economic Development Corp[®]

Indiana
Economic Development Corp[®]

Indiana's lead economic development agency, helping businesses launch, grow and locate in the Hoosier State.

IEDC BY THE NUMBERS

INDIANA ECONOMY



1,050+ foreign-owned businesses

Population based on the U.S. Census Bureau's 2020 estimates

IEDC OPERATIONS

71 Employees
 Across 7 Countries
 US, UK-Ireland, Germany, Italy, India, China, Japan

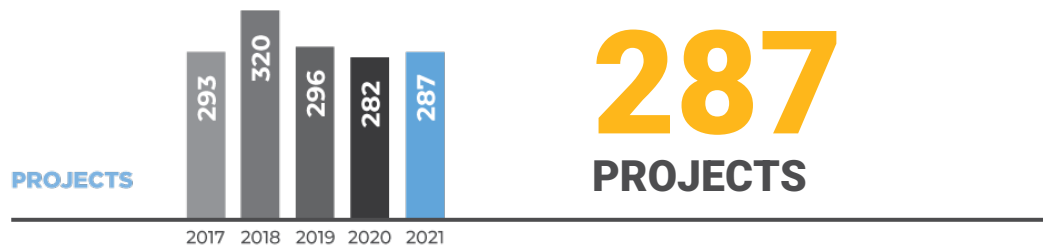


INITIATIVES & PROGRAMS MANAGED



2021

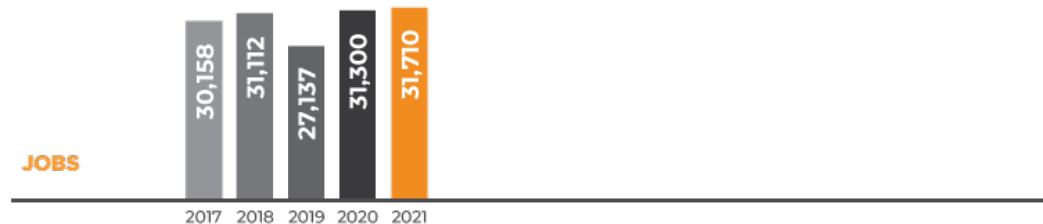
Another Record-Breaking Year



287
PROJECTS

NEW RECORD!

+410 Jobs
from 2020



31,710
JOBS



\$28.49
AVERAGE WAGE

NEW RECORD!

+1%
from 2020



\$1.88B
NEW PAYROLL

NEW RECORD!

+56%
from 2020

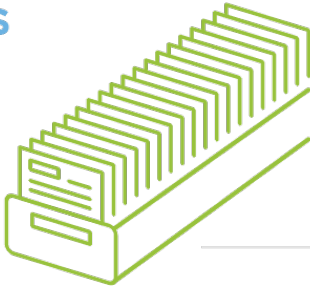


\$8.77B
NEW CAPEX

MIDYEAR REVIEW



2022
 Q1-2

PROJECTS
117 

NEW CAPEX
\$16.8B
(377% increase year over year)



PAYROLL
\$957M

AVERAGE HOURLY WAGE
\$35.53

(compared to \$25.12 state)



EXPECTED NEW JOBS
12,959

2022 INDIANA GLOBAL ECONOMIC SUMMIT

REGISTRANTS
944

30% International
33% U.S. (non-Indiana)
30% Indiana

SPONSORSHIP DOLLARS
\$1.24M

29 International
DELEGATIONS
Attended

EARNED MEDIA VALUE
\$14.9M

STARTUP GENOME 2022 GLOBAL STARTUP ECOSYSTEM REPORT



Global Top 40 Emerging Ecosystem
North American **Top 15** Ecosystem in Affordable Talent
North American **Top 20** Ecosystem in Bang for Buck
North American **Top 25** Ecosystem in Funding

NEW INDUSTRIES | Semiconductors | EV/Energy



Eli Lilly

Boone Co. // \$2.1B CapEx // Medical Manufacturing



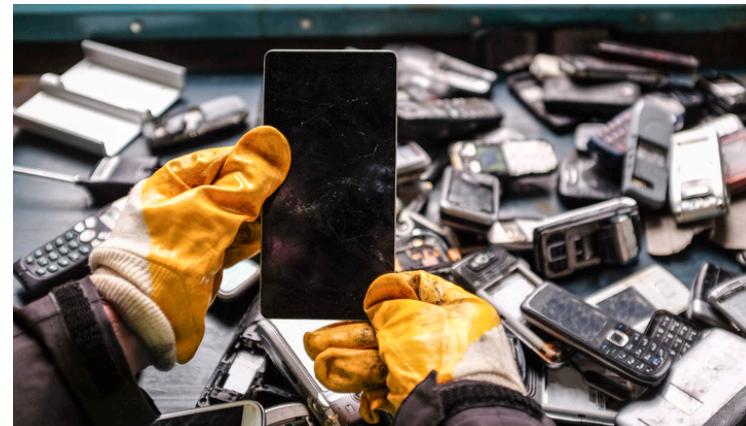
Stellantis + Samsung SDI

Howard Co. // \$2.5B CapEx // EV Battery Manufacturing



SkyWater Technology

Tippecanoe Co. // \$1.7B CapEx // Semiconductor Manu.



Exurban

Allen Co. // \$340M CapEx // E-Waste Recycling



Corteva Agriscience

Named Indianapolis as new global headquarters



Elanco Animal Health

Named Indianapolis as new global headquarters



Rolls-Royce

\$400M upgrade in Tippecanoe Co. and Indianapolis



Nucor Corp.

\$290M expansion in Montgomery Co.



Helping entrepreneurs
start stronger, grow
faster and work smarter

33,649

Counseling Hours
3,101 New Clients
Counseled

**NEW
RECORD!**
+11.9%
from 2020

5,618

Clients Served

**NEW
RECORD!**
+3%
from 2020

\$132.6M

Capital Infusion
Generated

(Second-highest on record)

1,574

Jobs Created

389

Business Starts

(Second-highest on record)

22,724

Jobs Supported

(Second-highest on record)

3,114

Training Attendees

(280 Training Events)

For every dollar spent on
the Indiana SBDC services, **\$30.10**
was earned/returned
in various forms of capital
infusion to small businesses*

*Includes federal, state and local funding

New Business Starts

Northwest: **56**

Southeast: **52**

Central: **51**

East Central: **29**

Northeast: **33**

Southwest: **45**

North Central: **21**

Hoosier Heartland: **40**

West Central: **37**

South Central: **25**

5,618 Clients Assisted

(New Record)

51% women-owned

33% minority-owned

32% located in rural
communities

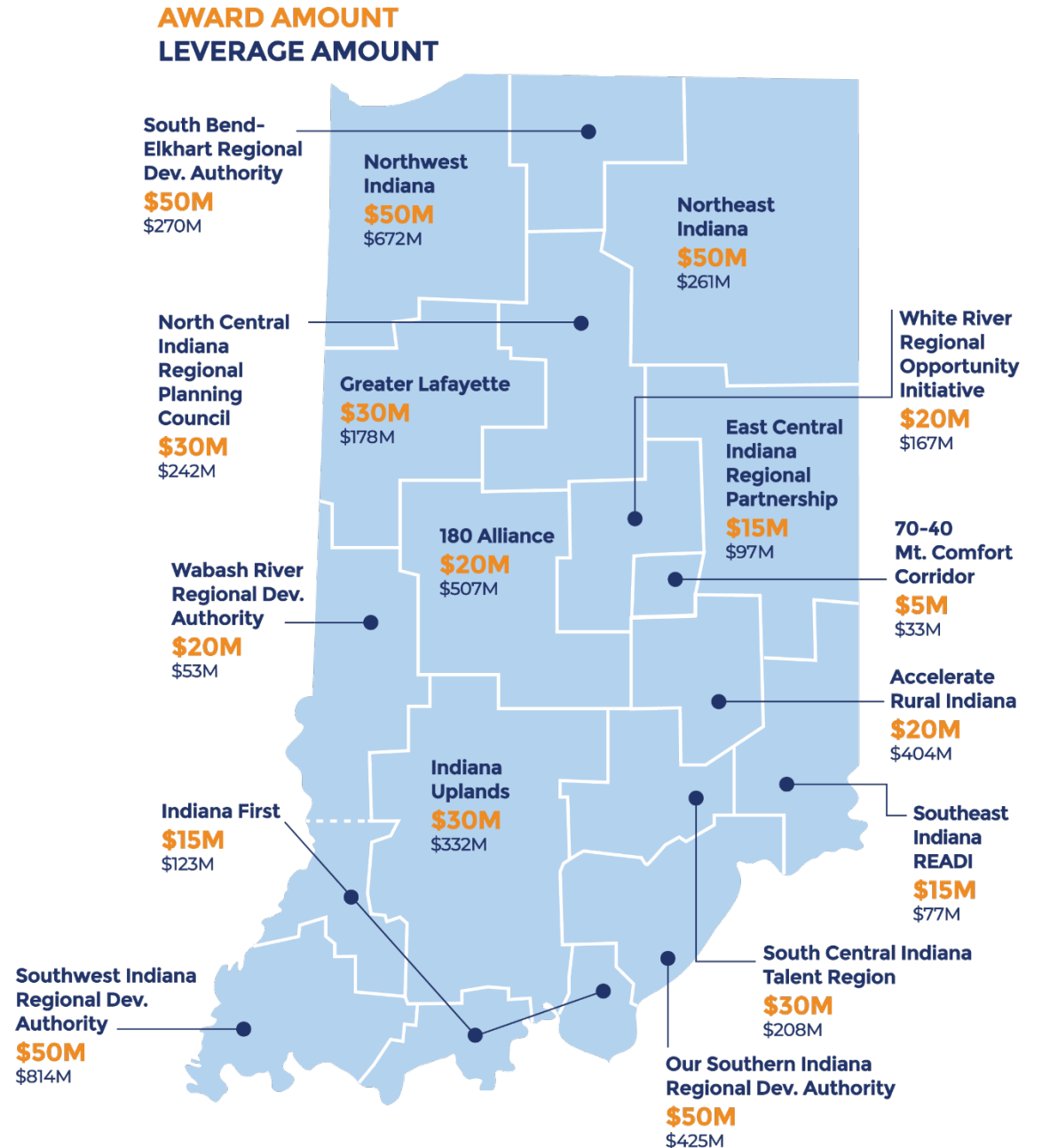
7% veteran-owned



\$500M Awarded and \$9.86B Leveraged

17 regional proposals represent more than \$15 billion of investment demand in projects like trails, broadband, childcare and wellness initiatives, workforce development programs, and marketing.

- › Nearly 800 projects and programs are included;
- › 10:1 leverage from private and public sources to state investment; and
- › 7:1 match from private sources to state investment, more than 66% of total investment originates from the private sector.





The roadmap to a more prosperous Indiana

Indiana
Economic Development Corp[®]



- Entrepreneurship
- Economy of the Future
- Energy Transition
- Environment
- External Engagement

Our 5E Vision for the Future

Building a prosperous, innovative, and inclusive future for Indiana

1

Entrepreneurship

Economy of the Future
Energy Transition
Environment
External Engagement

Entrepreneurship

We invest in our state's thriving entrepreneurial ecosystem with dedicated staff, financial support, and a clear vision that innovation is critical to our growth focusing on connecting entrepreneurs to statewide resources and funding.

Infrastructure

Align statewide entrepreneurial resources into one ecosystem that is easy to understand and access

Increase resources available to support entrepreneurs, startups, and small businesses

Funding

Make available new funding sources to support Indiana businesses

Increase venture capital investments in Indiana startups and scale ups

Longevity

Increase success rate of new business starts

Catalyze vibrant ecosystem that continues to invest in entrepreneurship

2

Entrepreneurship

Economy of the Future

Energy Transition

Environment

External Engagement

Economy of the Future

Elevate Indiana as an emerging and inspiring destination for newly targeted, forward-looking industries.

Infrastructure

Pursue new funding through U.S. Innovation & Competition Act

Evaluate and restructure Indiana's financial toolkit

Industry

Diversify Indiana's economy to prepare for Fourth Industrial Revolution

Cultivate technological advancements in traditional, strong sectors

Increase attractions & expansions in high-growth, forward-looking sectors

Talent

Increase workforce and invest in talent pipeline for jobs of the future

Advance Indiana's median wage

3

Entrepreneurship
Economy of the Future
Energy Transition
Environment
External Engagement

Energy Transition

Establish Indiana as a leader in the energy transition, aligning to global sustainability goals and further enabling Indiana's ability to attract industry leaders and talent.

Preparation

- Develop an energy transition roadmap
- Reduce electric energy costs

Sustainability

- Achieve clean energy requirements for industries of the future
- Create new value and rewards for sustainable action

Resilience

- Ensure grid stability and long-term resilience

4

Entrepreneurship
Economy of the Future
Energy Transition
Environment
External Engagement

Environment

Attract, retain, and grow an inspired population and an energized workforce, Indiana is enhancing residents' quality of life through statewide investments in communities, infrastructure, art and culture, connectivity, and innovation.

Community

Invest in infrastructure, art and culture, amenities

Grow Indiana's population; retain and attract

Connectivity

Increase domestic and international connectivity

Increase community connectivity and collaboration across regions and state

Quality of Life

Improve health and wellness statewide

Invest in equity, inclusion and opportunity

5

Entrepreneurship
Economy of the Future
Energy Transition
Environment
External Engagement

External Engagement

Elevate our state's global brand by telling our story to individuals, businesses, and industries across the globe who can grow their footprint and bring their innovations to life with Indiana talent, geography, resources, and culture.

Evolve

Evolve the perception of the Indiana brand by developing branded content, tailored to specific audiences and delivered through strategic channels.

Bring to life the 5e strategy through impactful and inspiring storytelling and targeted promotion.

Amplify

Maximize partnerships and brand sponsorships and activations appealing to a broad range of stakeholders.

Identify new partnerships and areas of collaboration with civic organizations, nonprofits and associations within Indiana, the US and globally.

Enable

Provide the tools and processes to enable the IEDC and key partners to express one united Indiana brand globally.

Benchmark other economic development organizations for best-in-class initiatives and brand campaigns.

STIMULATING INNOVATION IN STRATEGIC SECTORS THROUGH PARTNERSHIPS ON OUR MOST AMBITIOUS INITIATIVES



Emerging Manufacturing Collaboration Center (EMC2)

Manufacturing 4.0



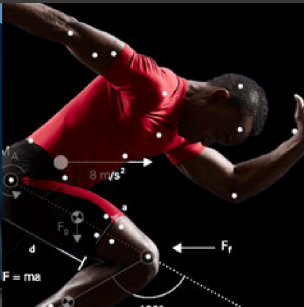
Indy Autonomous Challenge

Future Mobility



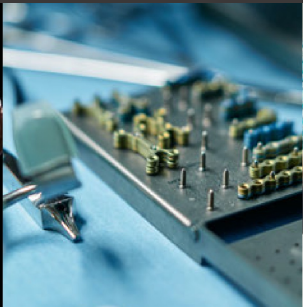
Indiana Biosciences Research Institute (IBRI)

Life Sciences



Sports Tech Headquarters

Sports Tech



AMPD + George Scalise Semiconductor Innovation Center

Semiconductors & Defense



AgriNovus

AgBioScience



Indiana 5G Zone

Cybersecurity & FinTech



Battery Innovation Center (BIC) + Hydrogen Hub

Future Energy

Indiana Economic Development Corporation

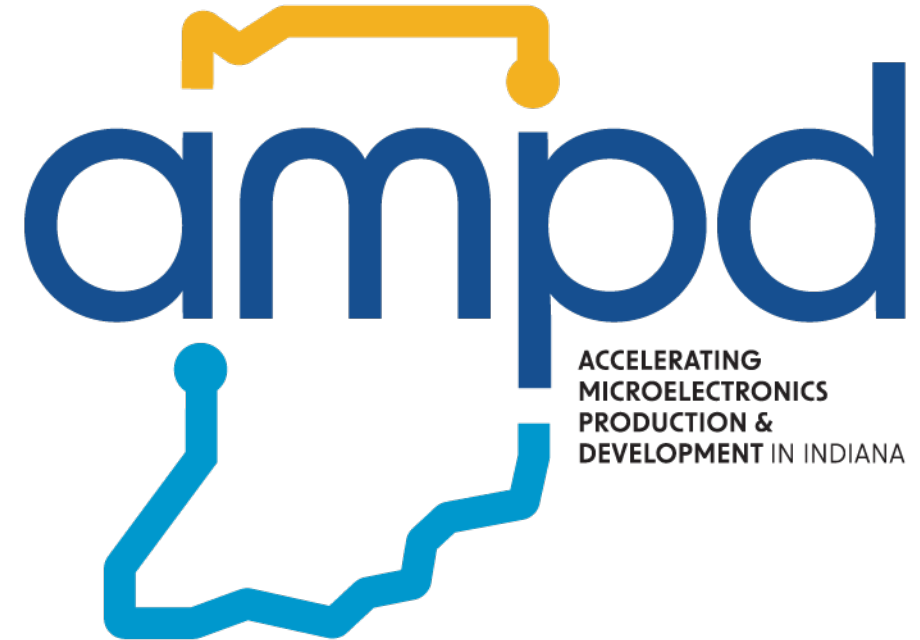
AMPD Overview

Jimmy Costa

Senior Vice President, Innovation & Semiconductor Strategy

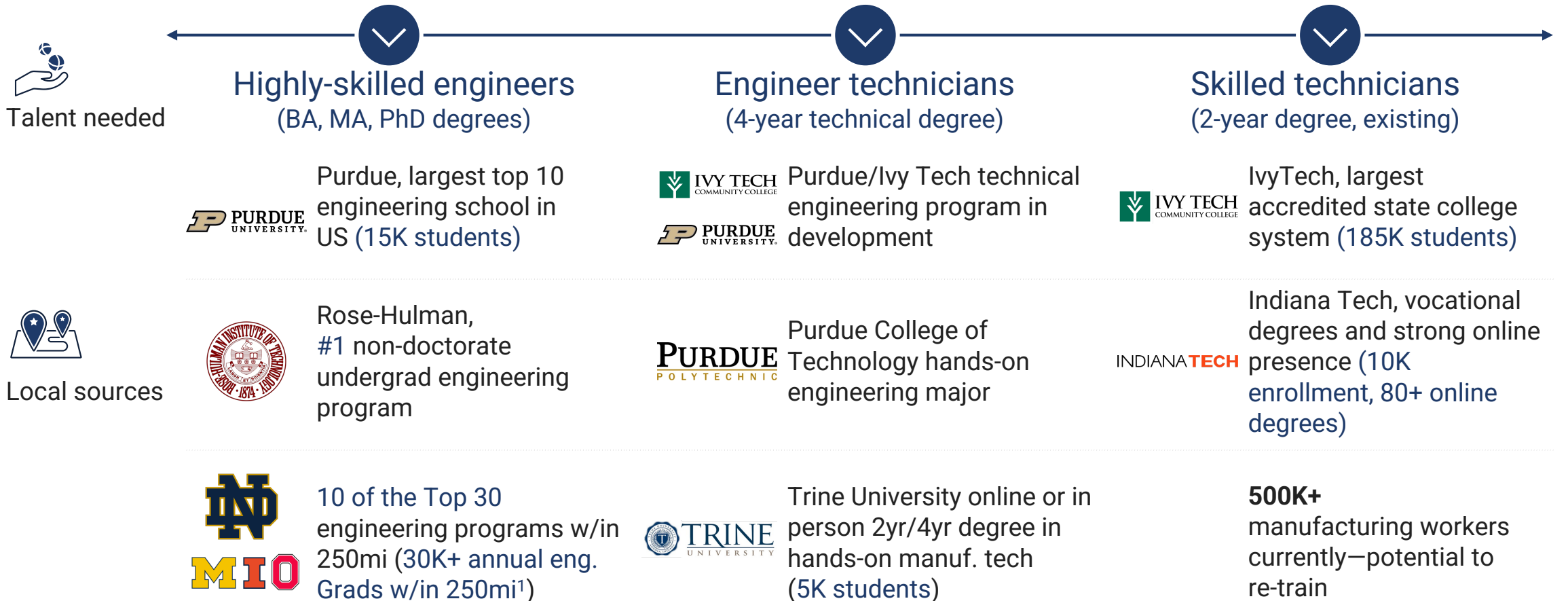
ACCELERATING MICROELECTRONICS PRODUCTION AND DEVELOPMENT (AMPD)

- Committed to making Indiana a leader in semiconductor manufacturing
- Members include industry veterans, academia leadership, construction and site selection experts, as well as strategy consultants
- AMPD will leverage Indiana's assets to secure commercial semiconductor and federal funding opportunities





IN can meet need for engineering and technical talent through a robust higher-ed network and a large existing manufacturing workforce in adjacent industries



1. Includes Bachelor's, Masters and PhD students in Engineering; w/in ~250 mile radius of Indiana
 Source: State of Indiana Talent Report; National Center for Education Statistics, Annual Degrees Conferred, 2019-2020



Crane Naval Center and its nearby technology park put Indiana companies next-door to the DoD's semiconductor gatekeeper

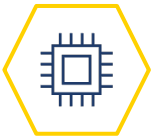
Why NSWC-Crane is nationally relevant for semiconductors



Authorizes nearly all microelectronics to be used by U.S. defense contractors (e.g., Lockheed)



Directly spends ~45% of approved DoD budget for microelectronics, totaling apx. \$1.5B¹



Researches semiconductor application with its 2,500 scientists and technicians



Influences military spending decisions by other Defense agencies and U.S. lawmakers

How NSWC-Crane is building a surrounding innovation cluster



Houses a 14,000 square-foot hub for Purdue University's startup foundry and workforce training



Leases space to dozens of firms, including major defense contractors (e.g., SAIC, CACI)



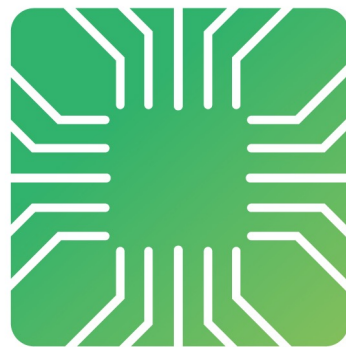
Hosts an annual conference on electronic warfare with military and industry attendees



Offers 30-minute interstate access to Indiana University and its students and faculty



¹ Calculated as 2023 budget for Trusted & Assured Microelectronics (\$0.95B), plus other contracts with NAICS codes related to microelectronics, out of \$3.3B
SOURCE: NSWC Crane website; Westgate@Crane Technology Park website; Inspector General, U.S. Defense Department, Report No. DODIG-2022-084 (May 22, 2022); NAVSEA; FY23 DoD Budget Materials; Federal Procurement Data System



GEORGE SCALISE

SEMICONDUCTOR INNOVATION CENTER

POWERED BY  **9.12**



Foundry at Westgate

- **Multi-Phase Development**
 - **Phase 1: 100,000 Sq-Ft Semiconductor Production Facility**
 - **Ability to expand east as needed**
 - **Potential 50k sq-ft laminate production structure located South (shown, but not included with the scope of this current effort)**
- **Core Focus**
 - **Heterogeneous Integration**
 - **Radiation Hardened (RAD HARD)**
 - **Advanced Packaging**
 - **Trusted and Assured Mfg.**
 - **Split Fab Mfg.**



Foundry at Westgate Capabilities

- **Bay & Chassis Design**
- **Production not R&D**
 - **Targeting 10 to 1,000 (Wafer Scale)**
 - **Closes the 'Valley of Death'**
- **DoD Focused Production Capabilities**
 - **Without precluding commercial**
- **Industry Partners**
 - **4-8 Semiconductor Mfgs seeking to locate on premises**
 - **30 OEMs expressed support in utilization**
- **Secured TS Level SCIF on site**



Conceptual Building Rendering

